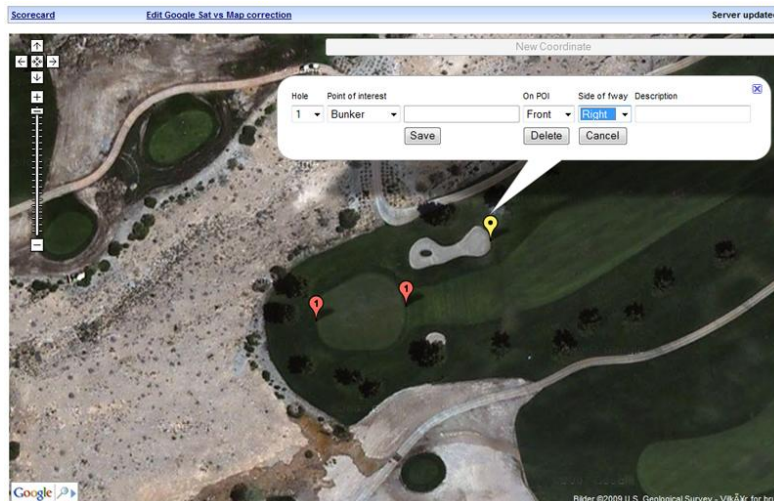


How to map GPS Coordinates on a course



With WeGolf you can map your own course on the Web. It takes about 15 minutes to map a complete course. Mapping is easy and done with the use of your mouse on satellite images from Google.

When mapping is complete, download the course to your phone and it will give you distances from where you stand on the hole to all the points you have mapped. You can also add / change and delete points later.

To start mapping you need to log in to your WeGolf web site. This can be done from www.wegolf.net – Your username is your international cell-phone number and your password has been sent to you when you downloaded. If you cannot remember it is by default the last 4 digits in your cellphone number. You can also find it by starting WeGolf on your phone and select TOOLS->MY ACCOUNT.

You can start mapping a existing course or you can create a new one. In this example we will create a new course from scratch.

Log on to WeGolf and you see the following screen: (note that if you have no rounds recorded, the list will be empty)

If you want to start with a course that is on the “public course” list you have to open it. Press Edit and then Submit. It will then be saved in your Courses (mine) where you are allowed to edit and change as you like.

Main Welcome 472222 [Logout](#)

[My details](#) [Courses \(Public\)](#) [Courses \(Mine\)](#) [Players](#) [Rounds](#) [Pictures](#) [Help](#)

Rounds(5)		
Date	Course	Players
05-10-2004 11:20	Asker GK - 70	Terje(13/+6/2)
12-09-2004 12:07	Asker GK - 70	Helge(97/+27/32), Jack(84/+14/32), Terje(92/+22/34), Werner(89/+19/39)
12-09-2004 11:59	Asker GK - 70	Terje(3/-1/4), Werner(9/+5/0)
02-09-2004 13:32	Nes GK - 72	Jern(120/+48/28), Terje(94/+22/36)
14-01-2003 02:03	Nes GK - 72	Rune(95/+23/31)
more...		

V 3.0.0

If you want to start with an existing course just select one from your list. If you want to create a new, press NEW in the top left corner

Main->Courses Welcome 472222 [Logout](#)

[New](#)

Delete	Name
<input type="checkbox"/>	GCP
<input type="checkbox"/>	Inverurie
<input type="checkbox"/>	Jawi
<input type="checkbox"/>	Kvinesdal 9hulls
<input type="checkbox"/>	Latrobe
<input type="checkbox"/>	Louis Trichardt
<input type="checkbox"/>	Maastricht International Golf
<input type="checkbox"/>	Når GK
<input type="checkbox"/>	Oakville Executive Mystic Ridge
<input type="checkbox"/>	Olandsbygdens GK
<input type="checkbox"/>	Park
<input type="checkbox"/>	Postolowo Akademia
<input type="checkbox"/>	Pout wood
<input type="checkbox"/>	Rancho Avandaro

You will then be taken to the scorecard. Fill in Name, Address, Par Values and Handicap index for all holes. If you also have access to slope and rating you can fill in this. WeGolf will then automatic calculate your stableford points when playing.

Since you are planning to use the GPS for distance it is not critical to fill in all the distances from the different Tee's. This will save you some time.

When done with entering the Basic course info press **SUBMIT** on the bottom and the course will be stored in your Courses (Mine) list. Click on the Course to open

it.

You will then see the scorecard you entered.

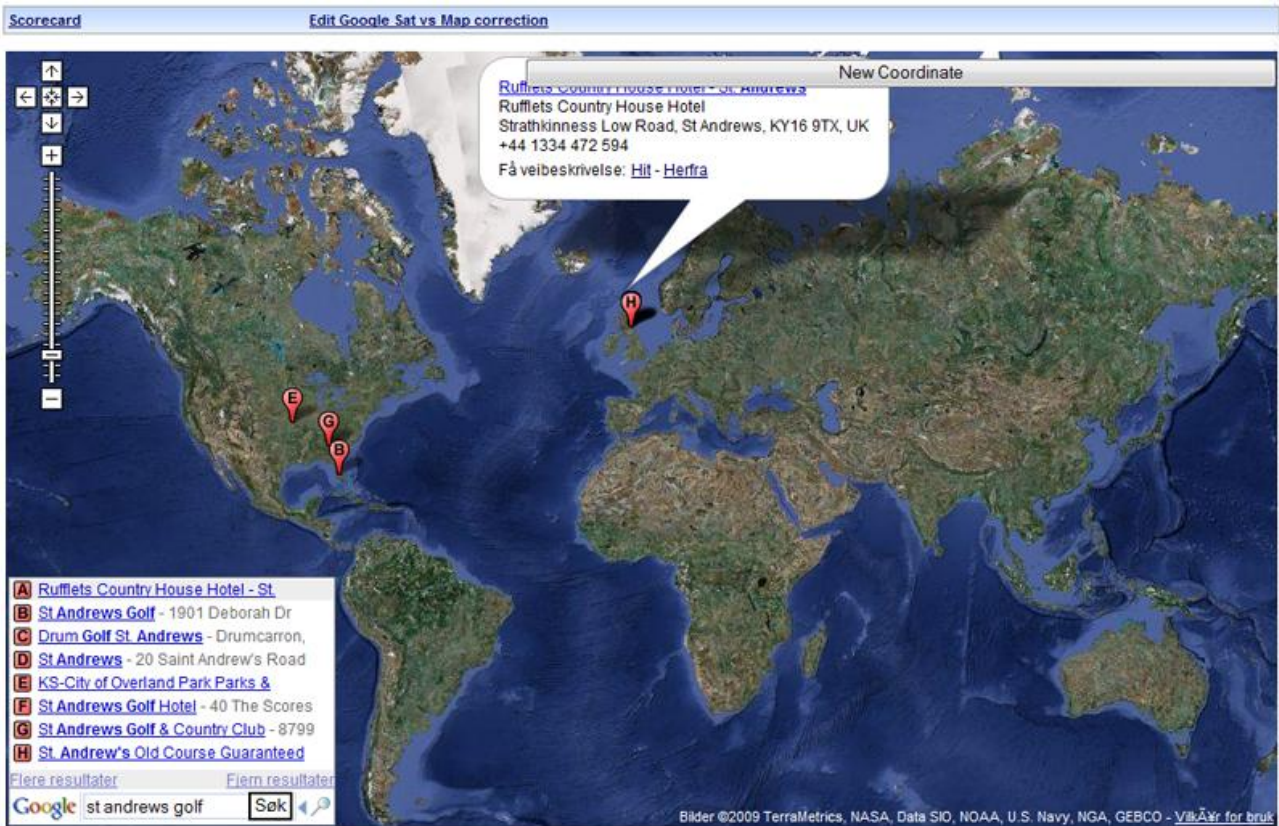
On top of the screen you now have an option to **EDIT COORDINATES** press this to start mapping your course.

The screenshot shows the WEGOLF website interface. At the top, it says "The Ultimate Golf Companion" and "in the Palm of your Hand!". Below this is the WEGOLF logo. The main content area is titled "Main-> Course->View" and "Welcome 472222 Logout". There are two buttons: "Edit" and "Edit coordinates on Map". Below these is a form for course details. The form includes fields for Name, Address, Country, and Phone. It also has a section for USGA rating with columns for White, Yellow, Blue, and Red, each with Rating and Slope sub-columns. There are also fields for Men and Women ratings. Below the rating section is a table for hole data. The table has columns for Hole (1-18), Out, In, and Total. The rows include Par, Handicap, and USGA rating (White, Yellow, Blue, Red). At the bottom of the form, there are fields for Hole, Latitude, Longitude, Point of interest, Side of fwy, and Description.

You are then in the Map view where you see a satellite image.

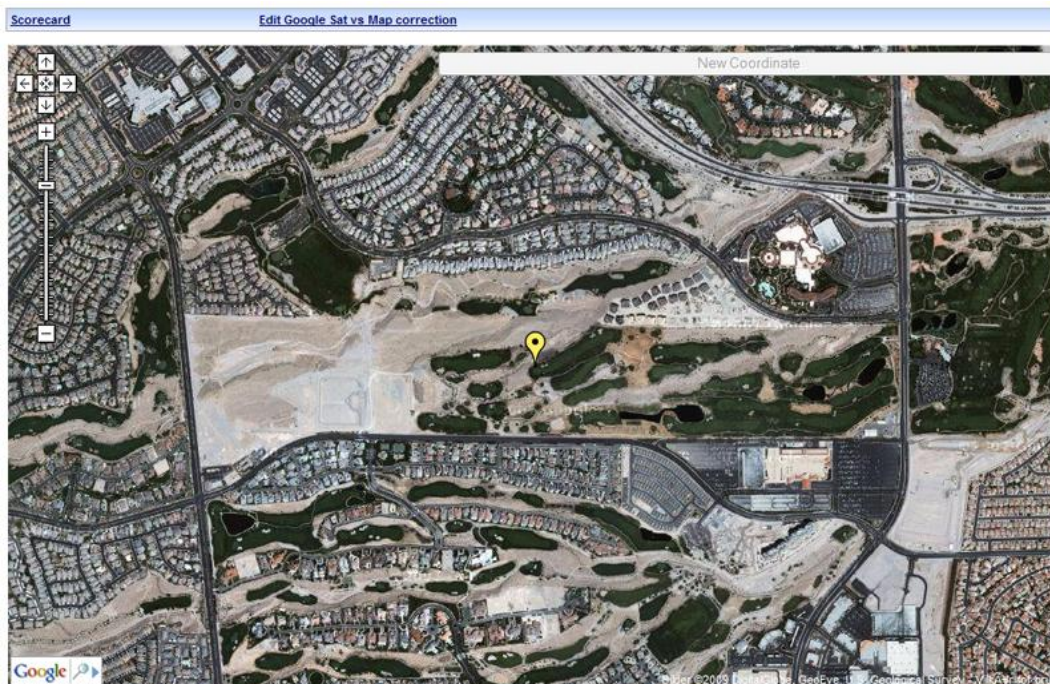
The screenshot shows the Google Maps interface with several annotations in red text and arrows. The annotations are:

- "Go to scorecard view" pointing to the "Scorecard" button at the top left.
- "If there the maps do not correlate with the satellite images it is possible to do a correction." pointing to the "Edit Google Sat vs Map correction" button at the top center.
- "Add a new coordinate" pointing to the "New Coordinate" input field at the top right.
- "Navigation" pointing to the navigation controls on the left side of the map.
- "Zoom In" pointing to the zoom in button on the left side of the map.
- "Zoom Out" pointing to the zoom out button on the left side of the map.
- "Search box that allows you to type and search for the Course you are going to map" pointing to the search box at the bottom left.



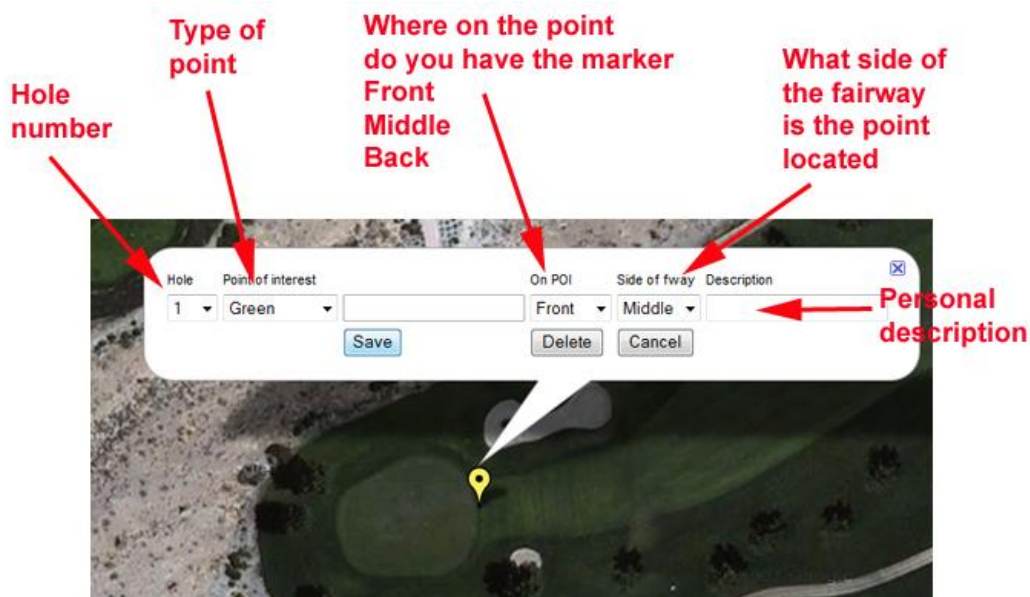
When you have located your course it is important that you zoom in as much as possible before you start mapping. This will ensure the best accuracy possible. Note that some areas do not have Google images good enough to do the mapping.

When you have zoomed in press **New Coordinate** – A Yellow marker will appear. Drag this into the correct position.



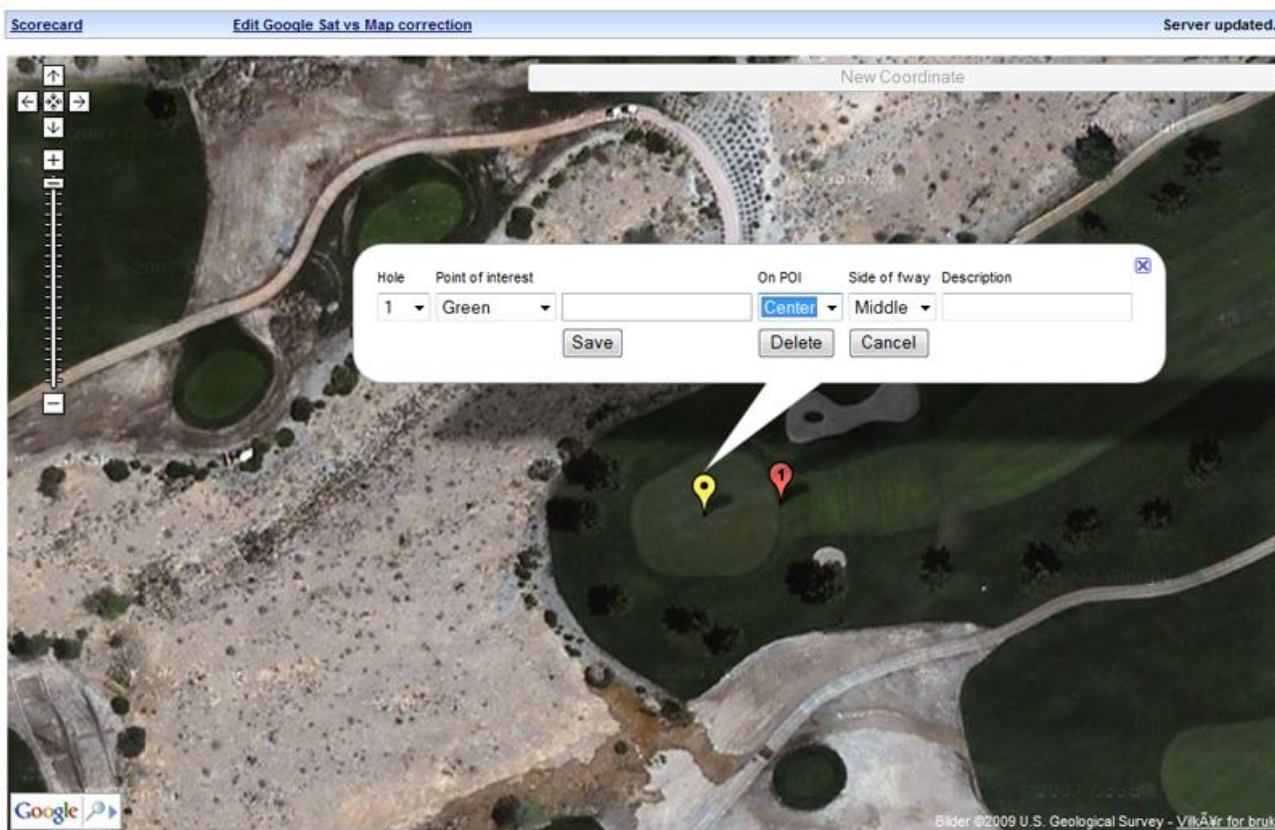
When you click the yellow marker it will open an input box.

Enter the description of the point.

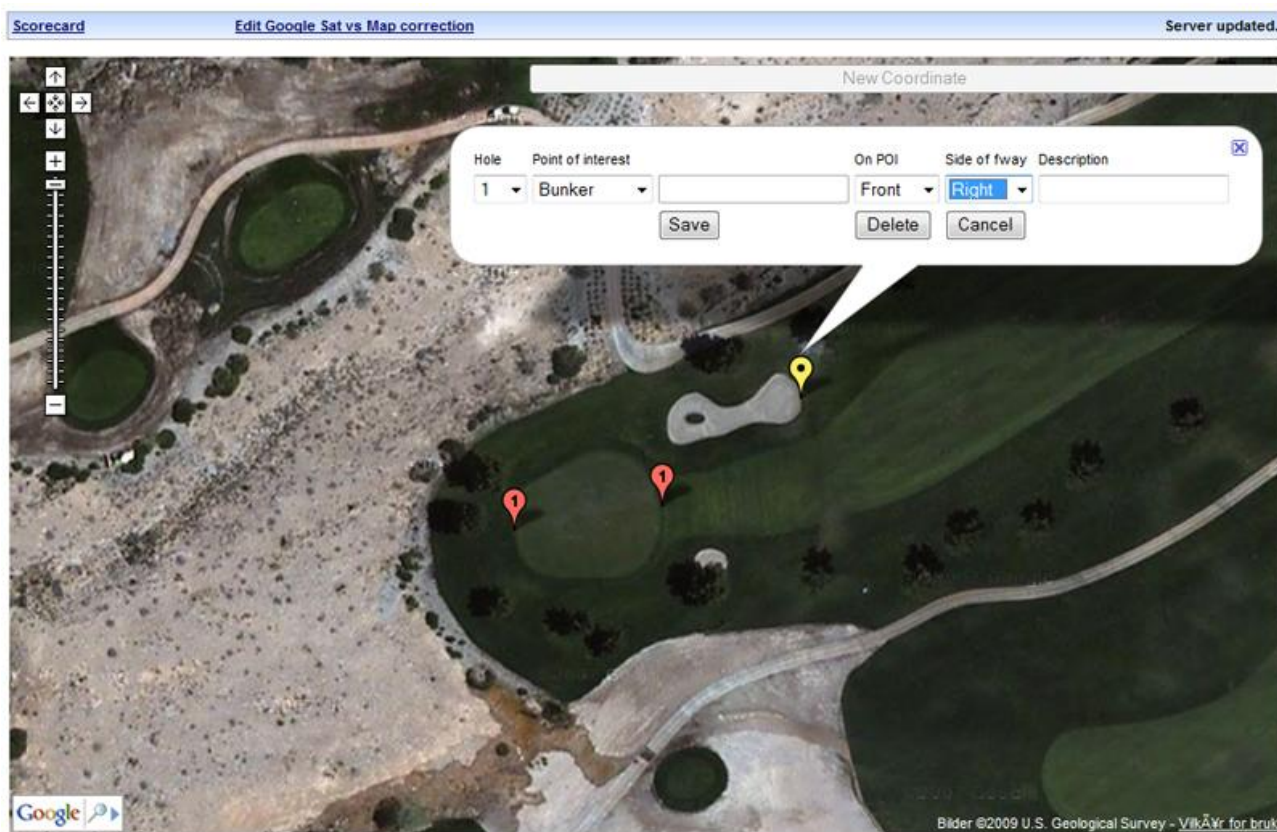


Press Save to store your first point. Your point will be marked with the hole number and turn Red. You can also drag, change and delete already marked points.

Then continue to add coordinates using the *New Coordinates* button.



Continue to map as many points you like. We suggest, from + back of all greens. Water, bunkers and other traps in play. Around 100 points on a course is sufficient in most cases.



When done download the course start WeGolf on your cell-phone and select *Courses->Download*

**If you want to have your course published
to the public area send an email to:
sales@wegolf.net**

**Include course name and your cellphone
number.**